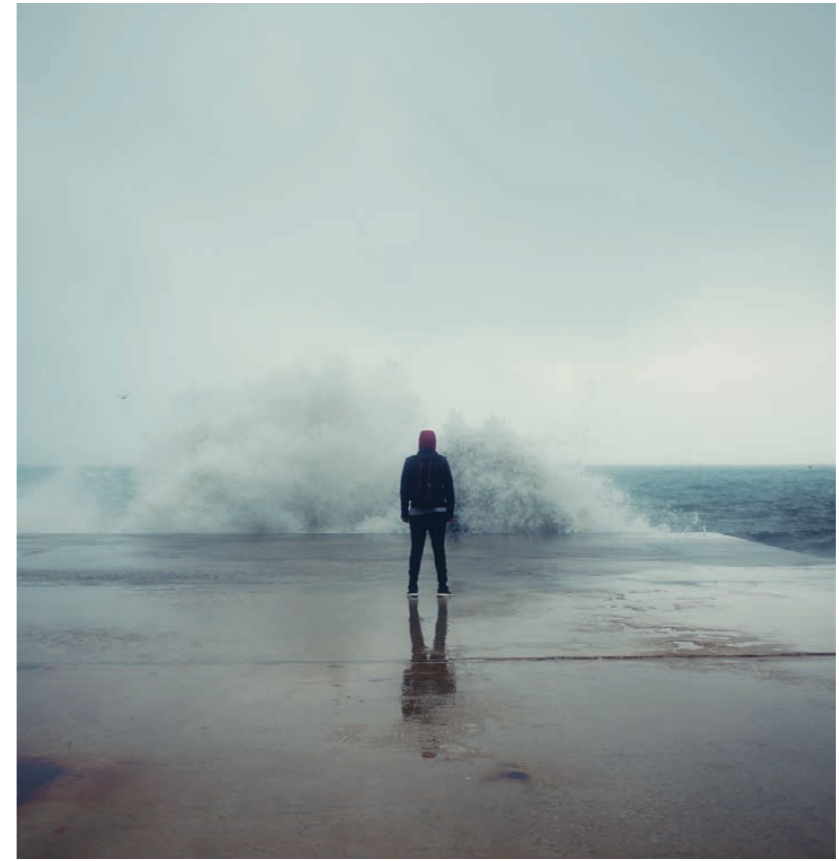


LANDSCAPE

GAZZINI
CERAMICA & DESIGN

BLACK GREY MUD IVORY



LANDSCAPE



LANDSCAPE BLACK 60x60 Nat. + 30x60 Nat.



BLACK



LANDSCAPE GREY 60x120 Lap. + 30x120 Lap. + BORDURA MULTILEVEL 15x60



GREY



LANDSCAPE MUD 60x120 Nat. + 20x120 Nat.



MUD



LANDSCAPE IVORY 60x120 Nat.



IVORY



LANDSCAPE GREY 10x30 Nat. + MOSAICO 5x5 Nat. su rete 30x30 + BORDURA MULTILEVEL 7,5x29 + LONDON 4x30 Nat.



LANDSCAPE GREY 5x20

LANDSCAPE black

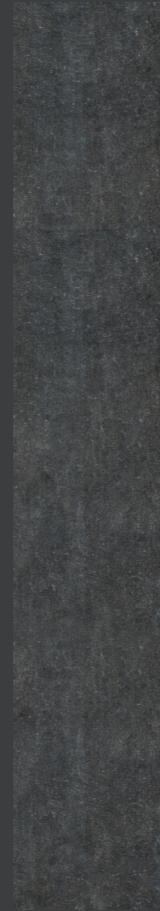
naturale



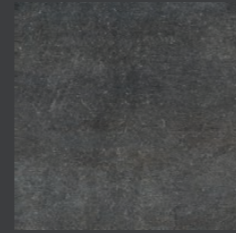
601232
LANDSCAPE BLACK NAT. RETT.
60x120 / 24"x48" COD.94 □



301223
LANDSCAPE BLACK NAT. RETT.
30x120 / 12"x48" COD.99 □



201204
LANDSCAPE BLACK NAT. RETT.
20x120 / 8"x48" COD.111 □



40928
LANDSCAPE BLACK NAT. RETT.
30x30 / 12"x12" COD.78 □



103068
LANDSCAPE BLACK NAT. RETT.
10x30 / 4"x12" COD.79 □



50208
LANDSCAPE BLACK NAT. RETT.
5x20 / 2"x8" (SFUSO) COD.93 □



606137
LANDSCAPE BLACK NAT. RETT.
60x60 / 24"x24" COD.79 □



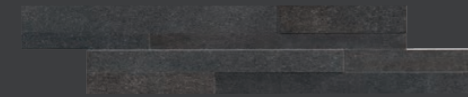
490431
LANDSCAPE BLACK NAT. RETT.
30x60 / 12"x24" COD.76 □



40932
LANDSCAPE BLACK
MOSAICO 5x5 SU RETE
30x30 / 12"x12" COD.22 ○



40936
LANDSCAPE BLACK FRAME
2,8x5,8 SU RETE
30x30 / 12"x12" COD.29 ○



490456
LANDSCAPE BLACK WALL. SU RETE
15x60 / 6"x24" COD.68 ○



380220
LANDSCAPE BLACK LISTELLO METAL
7,2x30 / 3"x12" COD.14 ○



380205
LANDSCAPE BLACK BORDURA MULTILEVEL
7,5x29 / 3"x12" COD.33 ○



310195
LANDSCAPE BLACK LONDON NAT.
4X30 / 2"x12" COD.32 ○

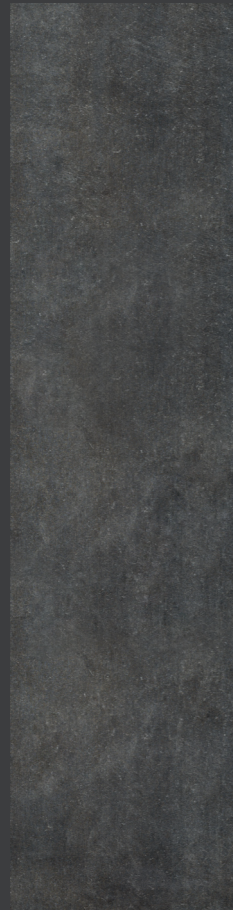


LANDSCAPE black

lappato



601236
LANDSCAPE BLACK LAP. RETT.
60x120 / 24"x48" COD.103 □



301227
LANDSCAPE BLACK LAP. RETT.
30x120 / 12"x48" COD.106 □



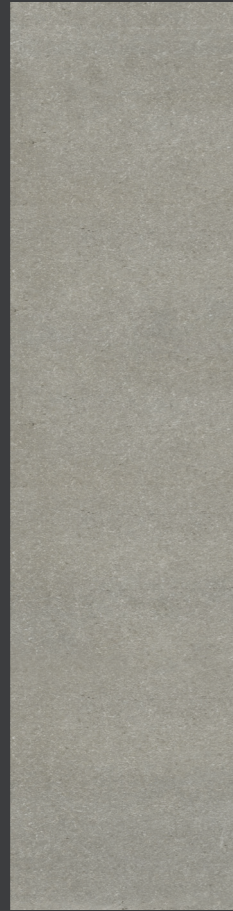
606141
LANDSCAPE BLACK LAP. RETT.
60x60 / 24"x24" COD.89 □



LANDSCAPE grey



601230
LANDSCAPE GREY NAT. RETT.
60x120 / 24"x48" COD.94 □



301221
LANDSCAPE GREY NAT. RETT.
30x120 / 12"x48" COD.99 □



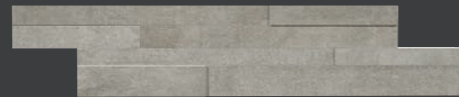
201205
LANDSCAPE GREY NAT. RETT.
20x120 / 8"x48" COD.111 □



40930
LANDSCAPE GREY
MOSAICO 5x5 SU RETE
30x30 / 12"x12" COD.22 ○



40934
LANDSCAPE GREY FRAME
2,8x5,8 SU RETE
30x30 / 12"x12" COD.29 ○



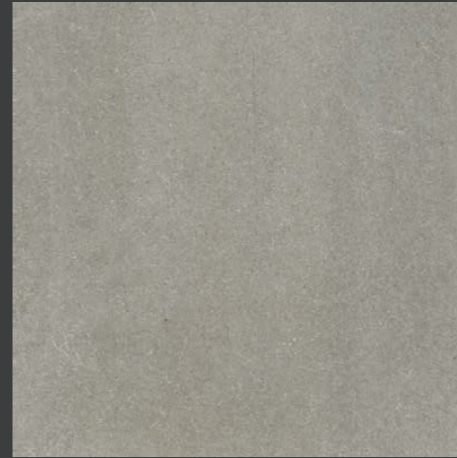
490454
LANDSCAPE GREY WALL
15x60 / 6"x24" COD.68 ○



380221
LANDSCAPE GREY LISTELLO METAL
7,2x29 / 3"x12" COD.14 ○



380203
LANDSCAPE GREY BORDURA MULTILEVEL
7,5x29 / 3"x12" COD.33 ○



606135
LANDSCAPE GREY NAT. RETT.
60x60 / 24"x24" COD.79 □

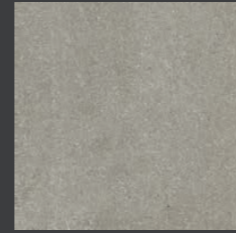


490429
LANDSCAPE GREY NAT. RETT.
30x60 / 12"x24" COD.76 □

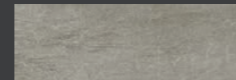


310193
LANDSCAPE GREY LONDON NAT.
4X30 / 2"x12" COD.32 ○

naturale



40926
LANDSCAPE GREY NAT. RETT.
30x30 / 12"x12" COD.78 □



103066
LANDSCAPE GREY NAT. RETT.
10x30 / 4"x12" COD.79 □



50206
LANDSCAPE GREY NAT. RETT.
5x20 / 2"x8" (SFUSO) COD.93 □



LANDSCAPE grey

lappato



601234
LANDSCAPE GREY LAP. RETT.
60x120 / 24"x48" COD.103 □



301225
LANDSCAPE GREY LAP. RETT.
30x120 / 12"x48" COD.106 □



606139
LANDSCAPE GREY LAP. RETT.
60x60 / 24"x24" COD.89 □



LANDSCAPE mud



601231
LANDSCAPE MUD NAT. RETT.
60x120 / 24"x48" COD.94 □



301222
LANDSCAPE MUD NAT. RETT.
30x120 / 12"x48" COD.99 □



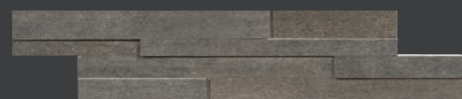
201207
LANDSCAPE MUD NAT. RETT.
20x120 / 8"x48" COD.111 □



40931
LANDSCAPE MUD
MOSAICO 5x5 SU RETE
30x30 / 12"x12" COD.22 ○



40935
LANDSCAPE MUD FRAME
2,8x5,8 SU RETE
30x30 / 12"x12" COD.29 ○



490455
LANDSCAPE MUD WALL.
15x60 / 6"x24" COD.68 ○



380223
LANDSCAPE MUD LISTELLO METAL
7,2x30 / 3"x12" COD.14 ○



380204
LANDSCAPE MUD BORDURA MULTILEVEL
7,5x29 / 3"x12" COD.33 ○



606136
LANDSCAPE MUD NAT. RETT.
60x60 / 24"x24" COD.79 □



490430
LANDSCAPE MUD NAT. RETT.
30x60 / 12"x24" COD.76 □

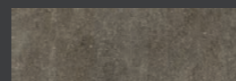


310194
LANDSCAPE BLACK LONDON NAT.
4X30 / 2"x12" COD.32 ○

naturale



40927
LANDSCAPE BLACK NAT. RETT.
30x30 / 12"x12" COD.78 □



103067
LANDSCAPE MUD NAT. RETT.
10x30 / 4"x12" COD.79 □



50207
LANDSCAPE MUD NAT. RETT.
5x20 / 2"x8" (SFUSO) COD.93 □



LANDSCAPE mud



601235
LANDSCAPE BLACK LAP. RETT.
60x120 / 24"x48" COD.103 □



301226
LANDSCAPE BLACK LAP. RETT.
30x120 / 12"x48" COD.106 □

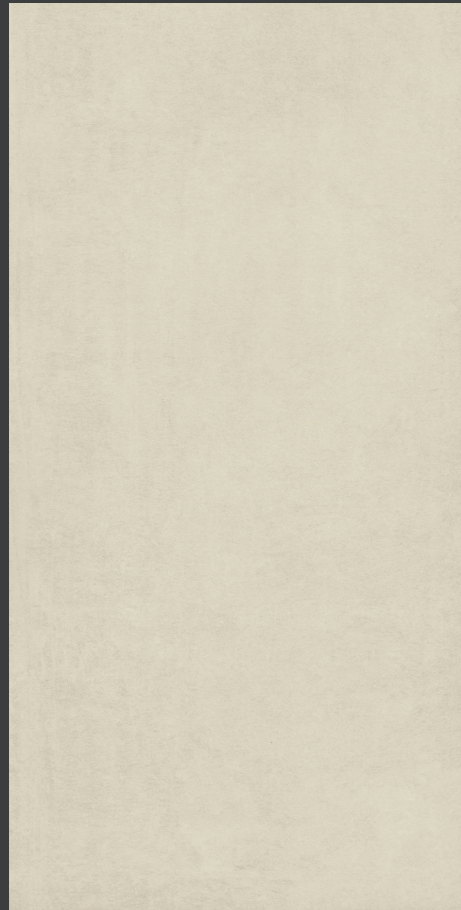
lappato



606140
LANDSCAPE BLACK LAP. RETT.
60x60 / 24"x24" COD.89 □



LANDSCAPE ivory



601229
LANDSCAPE IVORY NAT. RETT.
60x120 / 24"x48" COD.94 □



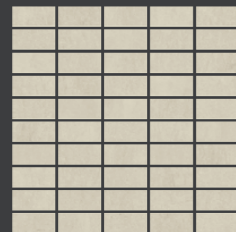
301220
LANDSCAPE IVORY NAT. RETT.
30x120 / 12"x48" COD.99 □



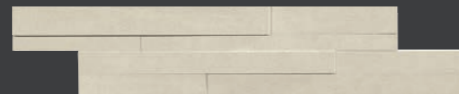
201206
LANDSCAPE IVORY NAT. RETT.
20x120 / 8"x48" COD.111 □



40929
LANDSCAPE IVORY
MOSAICO 5x5 SU RETE
30x30 / 12"x12" COD.22 ○



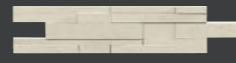
40933
LANDSCAPE IVORY FRAME
2,8x5,8 SU RETE
30x30 / 12"x12" COD.29 ○



490453
LANDSCAPE IVORY WALL
15x60 / 6"x24" COD.68 ○



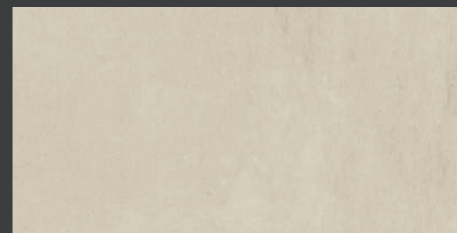
380222
LANDSCAPE IVORY LISTELLO METAL
7,2x30 / 3"x12" COD.14 ○



380202
LANDSCAPE IVORY BORDURA MULTILEVEL
7,5x29 / 3"x12" COD.33 ○



606134
LANDSCAPE IVORY NAT. RETT.
60x60 / 24"x24" COD.79 □



490428
LANDSCAPE IVORY NAT. RETT.
30x60 / 12"x24" COD.76 □

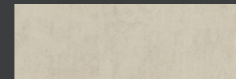


310192
LANDSCAPE IVORY LONDON NAT.
4X30 / 2"x12" COD.32 ○

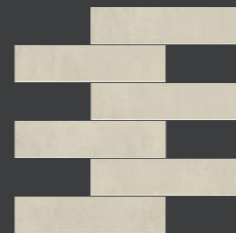
naturale



40925
LANDSCAPE IVORY NAT. RETT.
30x30 / 12"x12" COD.78 □



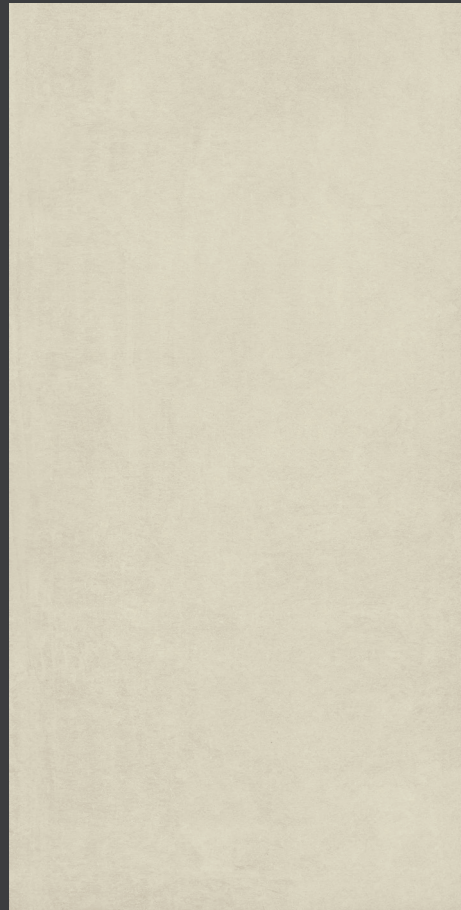
103065
LANDSCAPE IVORY NAT. RETT.
10x30 / 4"x12" COD.79 □



50205
LANDSCAPE IVORY NAT. RETT.
5x20 / 2"x8" (SFUSO) COD.93 □



LANDSCAPE ivory

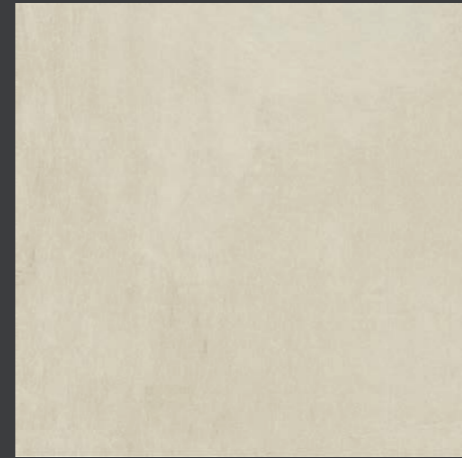


601233
LANDSCAPE IVORY LAP. RETT.
60x120 / 24"x48" COD.103 □

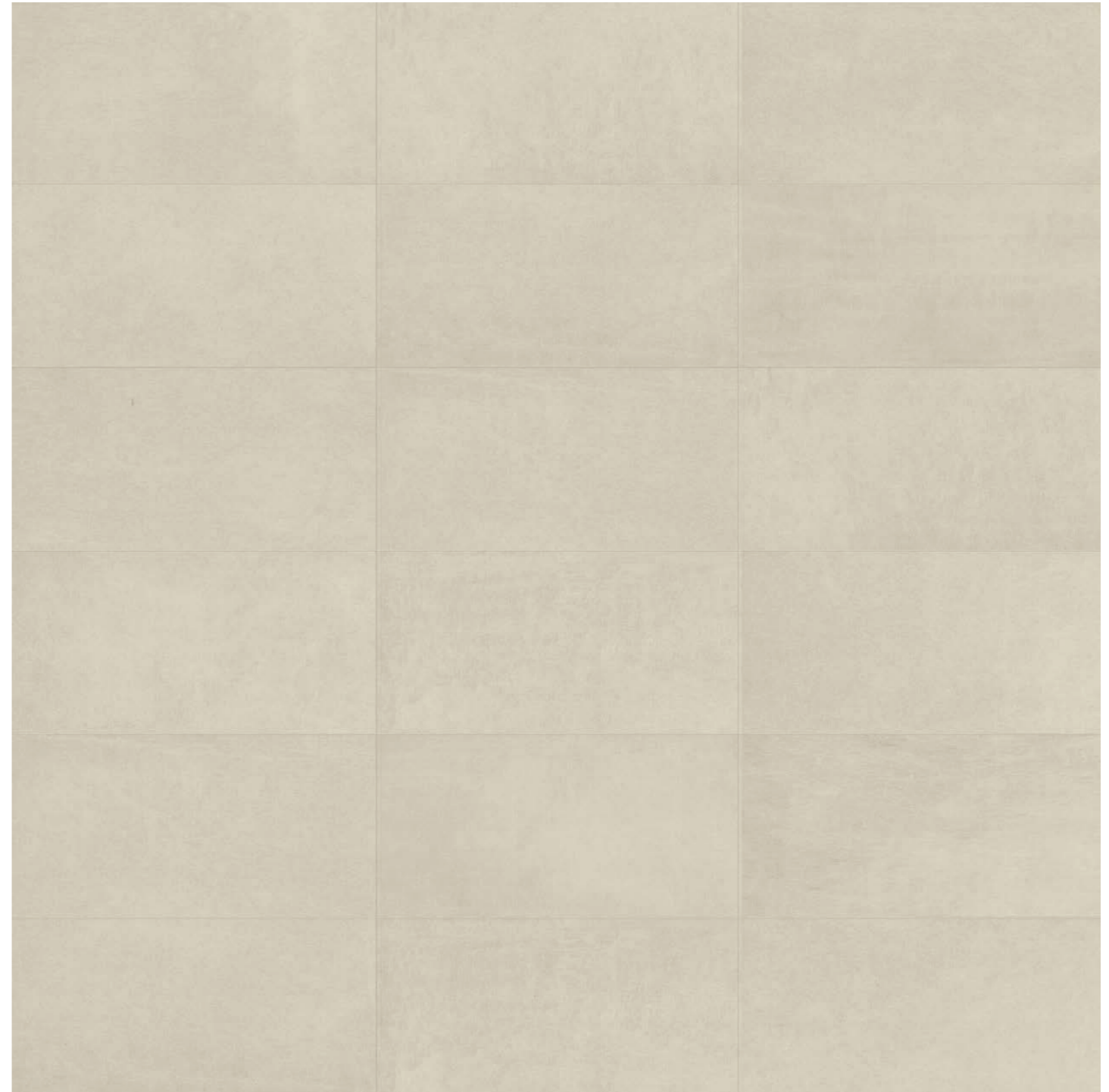


301224
LANDSCAPE IVORY LAP. RETT.
30x120 / 12"x48" COD.106 □

lappato



606138
LANDSCAPE IVORY LAP. RETT.
60x60 / 24"x24" COD.89 □



LANDSCAPE

PEZZI SPECIALI • SPECIAL TRIMS • PIÈCES SPÉCIALES • FORMSTÜCKE

BATTISCOPA



290601
LANDSCAPE BLACK BATTISCOPA 5x30
COD. 17 [△](#)

290602
LANDSCAPE GREY BATTISCOPA 5x30
COD. 17 [△](#)

290603
LANDSCAPE IVORY BATTISCOPA 5x30
COD. 17 [△](#)

290604
LANDSCAPE MUD BATTISCOPA 5x30
COD. 17 [△](#)



290605
LANDSCAPE BLACK BATTISCOPA 5x60
COD. 22 [△](#)

290606
LANDSCAPE GREY BATTISCOPA 5x60
COD. 22 [△](#)

290607
LANDSCAPE IVORY BATTISCOPA 5x60
COD. 22 [△](#)

290608
LANDSCAPE MUD BATTISCOPA 5x60
COD. 22 [△](#)

PER UNA POSA OTTIMALE DEL PRODOTTO CONSIGLIAMO SEMPRE DI MESCOLARE ALMENO TRE SCATOLE DI MATERIALE.

For the best product laying results, material from at least three boxes should be mixed.

Für eine optimale Verlegung des Erzeugnisses empfehlen wir stets, mindestens drei Packungen Material anzumischen.

Pour une pose excellente, nous recommandons toujours de mélanger le contenu d'au moins trois boîtes.



CERAMICA GAZZINI E L'AMBIENTE

In accordo con la norma ISO 1402 "Environmental labels and declarations" si dichiara che:

L'azienda è impegnata nella continua innovazione tecnologica dei propri processi per realizzare prodotti sempre più rispondenti alle richieste del mercato e nell'ottica di:

- riduzione del consumo energetico dei processi di produzione;
 - riduzione delle emissioni nell'aria e nell'acqua;
 - miglioramento dell'informazione al consumatore e della gestione dei rifiuti.
- Per limitare il proprio impatto ambientale CERAMICA GAZZINI S.p.A. opera come di seguito descritto:
- gli scarti di lavorazione sono completamente gestiti e riutilizzati;
 - tutti gli stabilimenti produttivi sono dotati di impianto di depurazione delle acque a circuito chiuso con recupero totale degli scarichi idrici provenienti dal ciclo produttivo e nessuno scarico in ambiente;
 - le emissioni gassose sono autorizzate dall'autorità competente, dotata di impianti per l'abbattimento degli inquinanti e sottoposte a controllo periodico per verifica del rispetto della legislazione vigente;
 - i rifiuti industriali sono smaltiti in conformità alle direttive comunitarie;
 - gli imballaggi sono destinati al recupero e riutilizzo;
 - l'impatto acustico nell'ambiente è attenuato con l'utilizzo di tecnologie idonee.

Le piastrelle ceramiche prodotte sono:

- un prodotto con una lunga durata di vita
- riciclabili al termine dell'utilizzo

CERAMICA GAZZINI AND THE ENVIRONMENT

In line with the ISO 14021 standard "Environmental labels and declarations" we declare that: The company is committed to the continued technological innovation of its processes to create products that increasingly meet the demands of the market and focus on:

- reduced energy consumption in production processes;
- reduced emissions into the air and water;
- improving consumer awareness and waste management.

To curb its environmental impact, CERAMICA GAZZINI S.p.A. has taken the following steps:

- manufacturing rejects are fully managed and reused;
- all the production units are equipped with a closed-circuit water purification plant with total recovery of liquid discharges coming from the production cycle and no discharges into the environment;
- emissions of gases are authorised by the competent authority, pollutant abatement systems are fitted and undergo periodic checks to verify they comply with the current laws;
- industrial waste is disposed of in compliance with the community directives;
- packaging is sent off to be recycled and reused;
- the acoustic impact on the environment is toned down via the use of suitable technologies.

The ceramic tiles produced are:

- a long-lasting product
- recyclable at the end of their use

	CARATTERISTICHE DI QUALITÀ QUALITY CHARACTERISTICS CARACTÉRISTIQUES DE QUALITÉ QUALITÄTSEIGENSCHAFTEN	NORMA NORM NORME NORME	REQUISITO NORMA REQUIRED STANDARDS VALEUR PRESCRITE SELON LA NORME NORMVORGABE	RISULTATO RESULT RÉSULTAT ERGEBNISS
	Assorbimento d'acqua Water absorption of the body Absorption d'eau de support Wasseraufnahme des Scherbens	ISO 10545-3	≤ 0,5	0,1%
	Resistenza a flessione Breaking strenght Résistance à la flexion Biegefestigkeit	ISO 10545-4	≥ 35 N/mm ²	51 N/mm ²
	Resistenza all'abrasione Abrasion resistance Résistance a l'abrasion Abriebbeständigkeit	ISO 10545-7		PEI V
	Resistenza al gelo Frost resistance Résistance au gel Frostbeständigkeit	ISO 10545-12	Nessun campione deve presentare rotture o alterazioni apprezzabili alla superficie No samples must show ruptures or noticeable surface alteration Aucuns enchantions doit présenter ruptures ou altérations appréciables de la surface Keines der Muster sollte Risse oder sichtbare Fehler der Oberfläche zeigen	Conforme Conformity Conforme Gemäss
	Resistenza all'attacco chimico Chemical resistance Résistance à l'attaque chimique Beständigkeit gegen Chemikalien	ISO 10545-13	Nessun campione deve presentare alterazioni visibili all'attacco chimico No samples must show visible signs of chemical attack Aucuns enchantions doit présenter des altérations visibles à l'attaque chimique Keines der Muster sollte sehenswerte Aenderungen nach Behandlung mit Chemikalien zeigen	Conforme Conformity Conforme Gemäss
	Resistenza agli sbalzi termici Thermal shock resistance Resistance aux écarts de température Temperaturwechselbeständigkeit	ISO 10545-5		Conforme Conformity Conforme Gemäss
	Resistenza scivolosità Sliding resistance Resistance au glissement Rutschfestigkeit	DIN 51130 R		R10
	Coefficiente d'attrito (scivolosità) Friction coefficient (slipperiness) Reibungskoeffizient (schluepfrigkeit) Coefficient de friction (glissement)	ASTM C 1028	> 0,6 ≥ 0,6	DRY > 0,6 WET > 0,6
	Lieve Variazione Slight Variation Légère Variation geringe Abweichung			V2



V1

Aspetto uniforme
Uniform appearance
Aspect uniforme
einheitliches Aussehen



V2

Lieve Variazione
Slight Variation
Légère Variation
geringe Abweichung



V3

Moderata Variazione
Moderate Variation
Variation modérée
maessige Abweichung



V4

Fortè stonalizzazione
Substantial Variation
Effet dénuancé très accentué
akzentuierte Variation

MADE IN ITALY



GAZZINI
CERAMICA & DESIGN

Ceramica Gazzini SpA - via Milano, 2 - 42048 Rubiera (Reggio Emilia) Italy
Tel. 0522 628112 - 627518 - 628639 - Fax 0522 628437
info@ceramicagazzini.it - www.ceramicagazzini.it

C.F. E P.I. 00140380353 - REG. IMP. REGGIO EMILIA N° 00140380353
CAPITALE SOCIALE I.V. € 546.000,00